

Manual instruction of Silver/BlackBox + Display

BMW Fxx 5/6 Series

Version:V1.0

Date: 11/20/2021



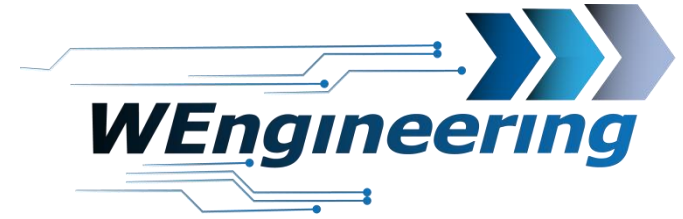
2



Manual instruction of Silver/BlackBox + Display BMW Fxx 5/6 Series

Version:V1.0

Date: 11/20/2021



3

Dismantling the interior trim

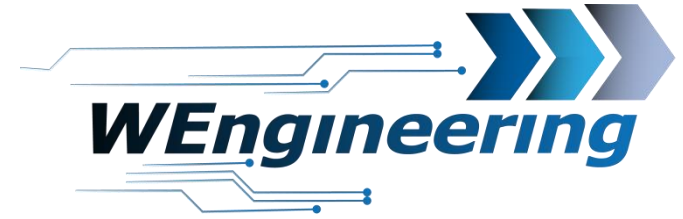
Loosen the bar carefully. Starting from the passenger side.



Manual instruction of Silver/BlackBox + Display BMW Fxx 5/6 Series

Version:V1.0

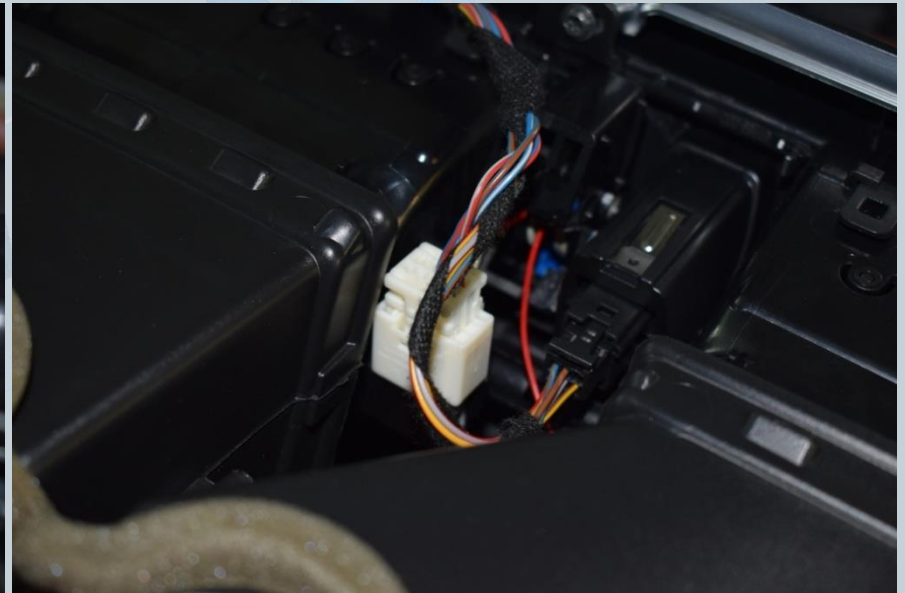
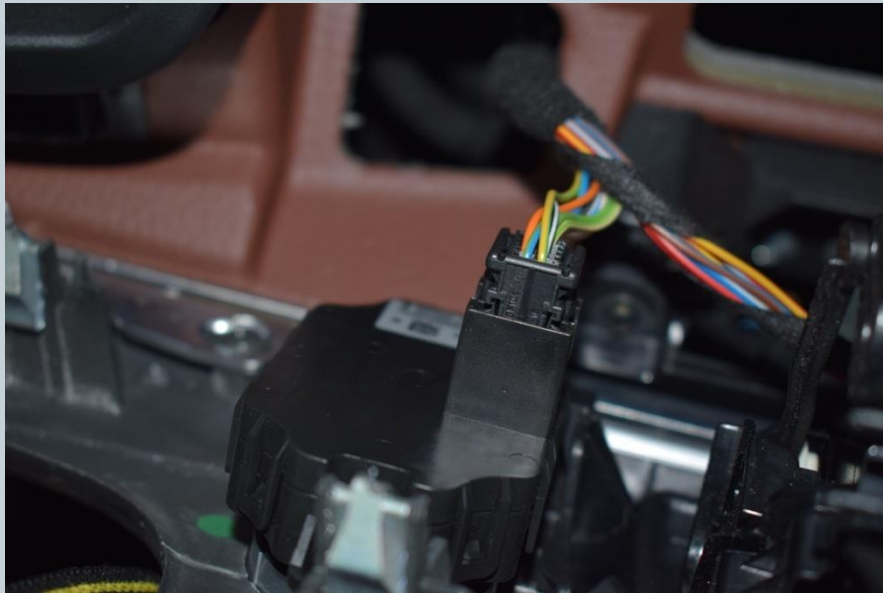
Date: 11/20/2021



4

Dismantling the interior trim

Pay attention to the plug connections.



Manual instruction of Silver/BlackBox + Display BMW Fxx 5/6 Series

Version:V1.0

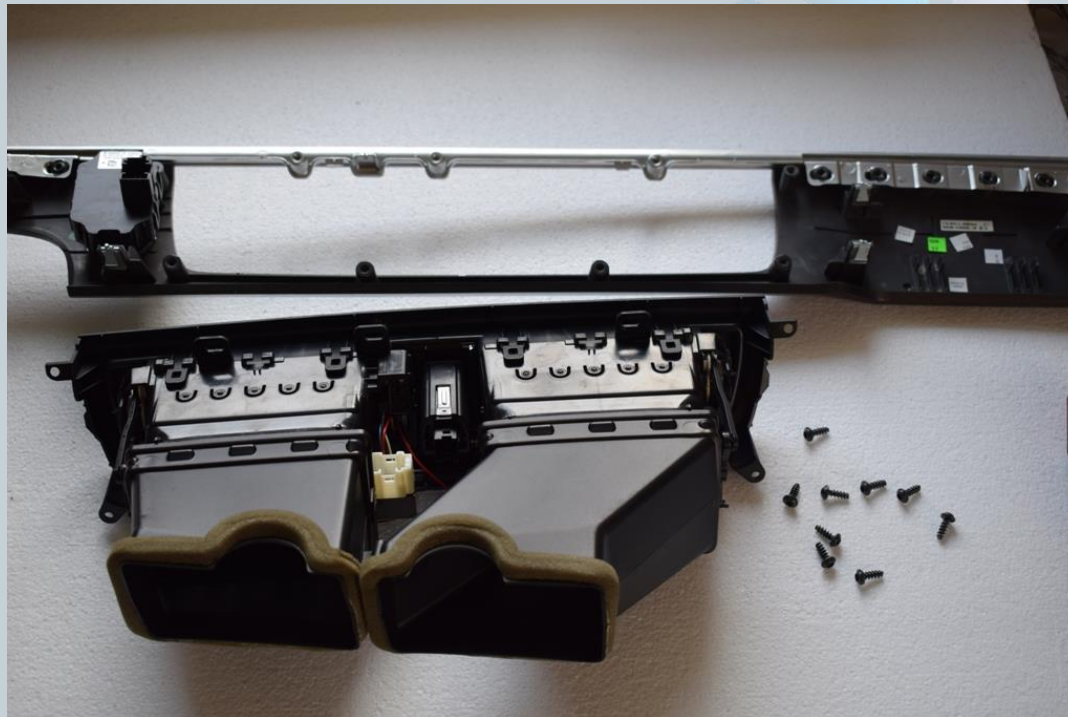
Date: 11/20/2021



5

Dismantling fresh air grill

Loosen the 9 Torx screws.

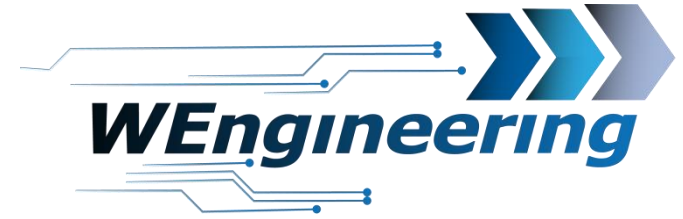


Manual instruction of Silver/BlackBox + Display

BMW Fxx 5/6 Series

Version:V1.0

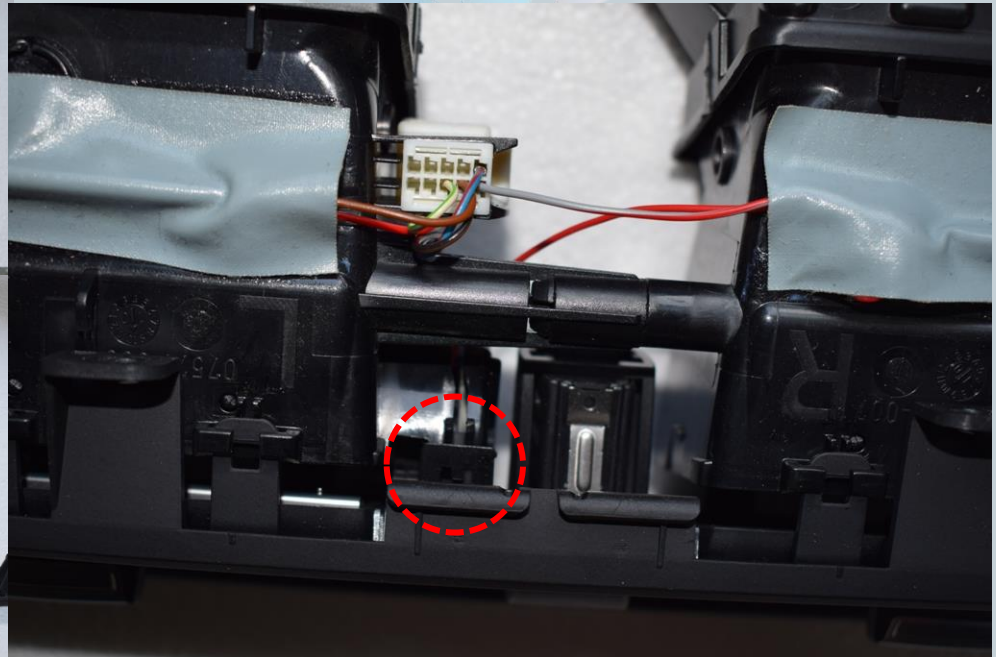
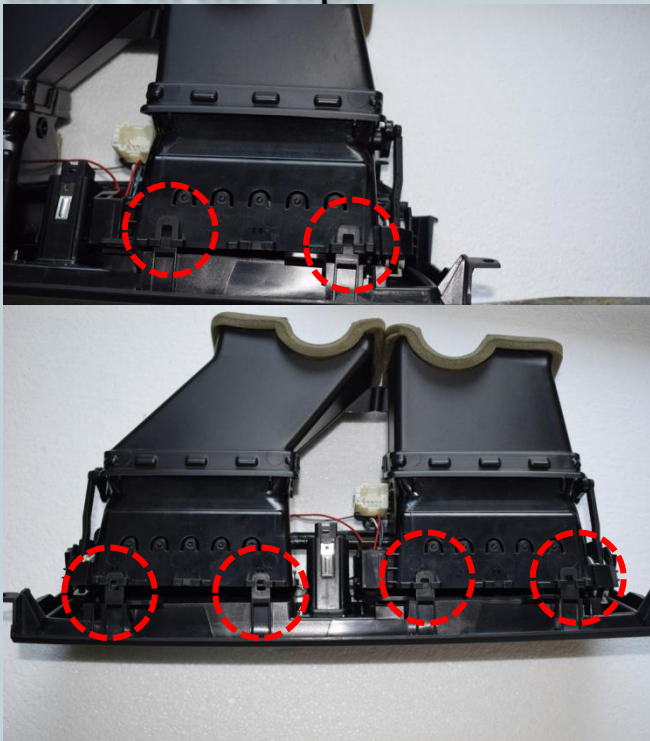
Date: 11/20/2021



6

Mounting display

Release the catches on the underside, starting from right to left. Do the same on the top.

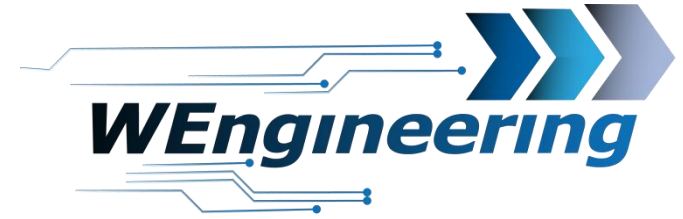


Manual instruction of Silver/BlackBox + Display

BMW Fxx 5/6 Series

Version:V1.0

Date: 11/20/2021



7

Mounting display

Remove the grille from the driver side cover. These are only clipped in on the left.



Remove the grille from the driver side nozzle part. These are only clipped in below.



Manual instruction of Silver/BlackBox + Display

BMW Fxx 5/6 Series

Version:V1.0

Date: 11/20/2021



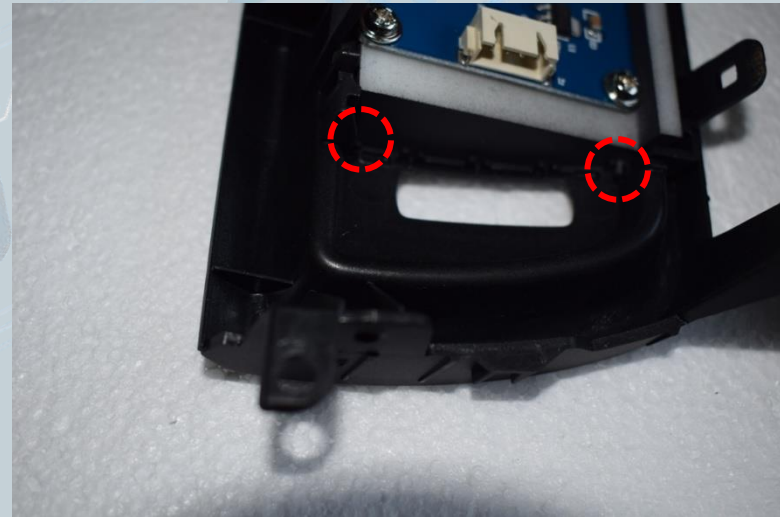
8

Mounting display

First insert the right part as far as possible. It takes some strength. The gap must be as small as possible.



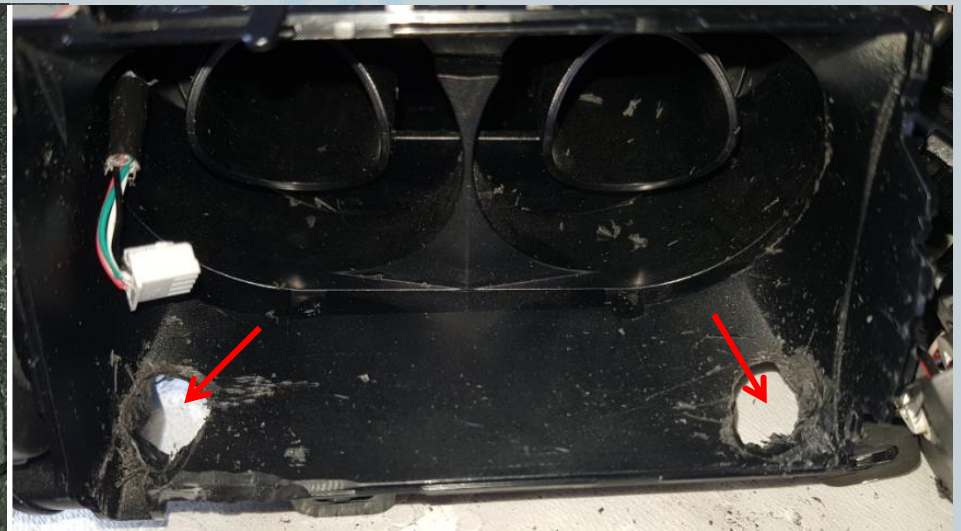
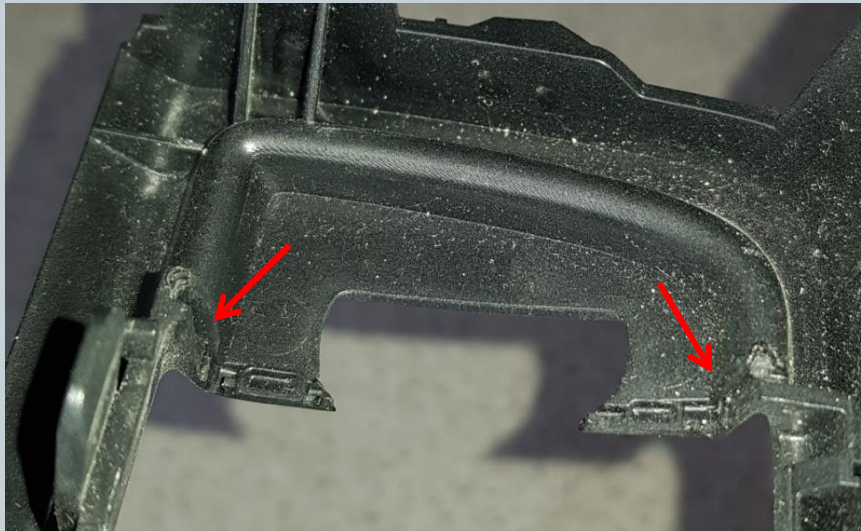
Now the left side can be snapped into place carefully. Make sure that no mandrel is broken off for attachment.



Mounting display **only 4 zonen ventilation**

To avoid the editing of the ventilation you can replace the central 4 zone ventilation with a 2 zone ventilation. It is plug&play.

The display does not fit in without editing the ventilation. The red arrows should clarify what needs to be worked on. At these points, something has to be sanded, possibly more than shown in the pictures.

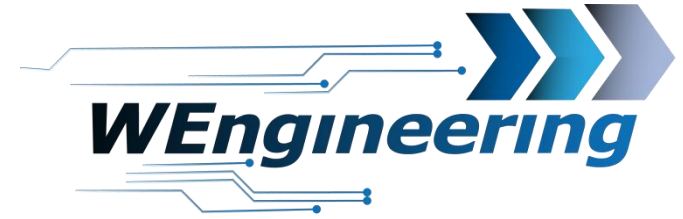


Manual instruction of Silver/BlackBox + Display

BMW Fxx 5/6 Series

Version:V1.0

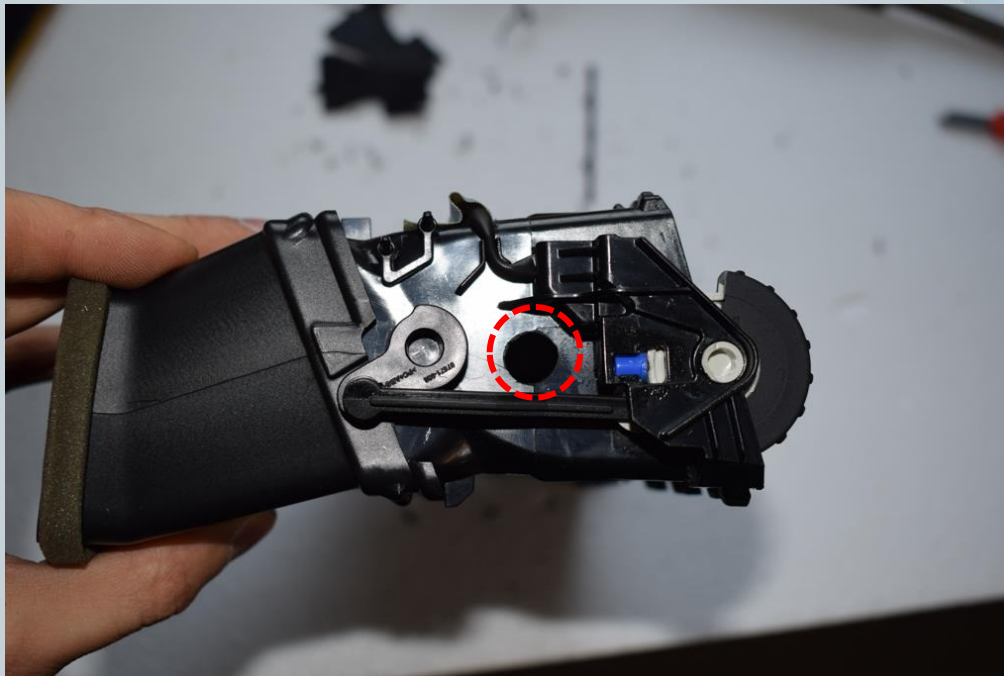
Date: 11/20/2021



9

Mounting display

A hole for the display cable must be drilled in the nozzle part. The hole should be so large that the display connector fits through.



TIP: Secure the cable from the inside using cable ties to create a strain relief.



Mounting display

Now everything can be built together. When assembling, make sure that all adjustment elements are in the correct position. **The fresh air flap must remain closed.** Let the cable look out in the driver's footwell.



The interior bar can be clipped in again. Starting from left to right. Pay attention to the correct position.

Connection of the WMI control unit

Loosen a screw in the carpet strip on the right side and unclip the strip. The foot rough cover is attached with 2 screws (red arrows). Loosen the screws and pull the cover down. Disconnect the OBD connector and the speaker.



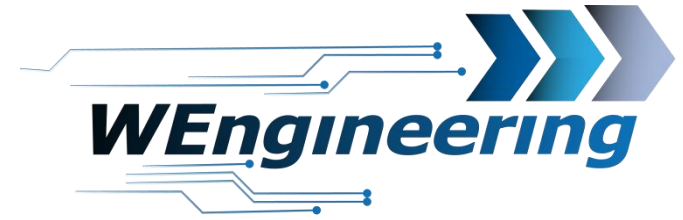
Loosen 2 screws on the storage compartment and pull out the compartment. The WMI control unit is located in this area.

Manual instruction of Silver/BlackBox + Display

BMW Fxx 5/6 Series

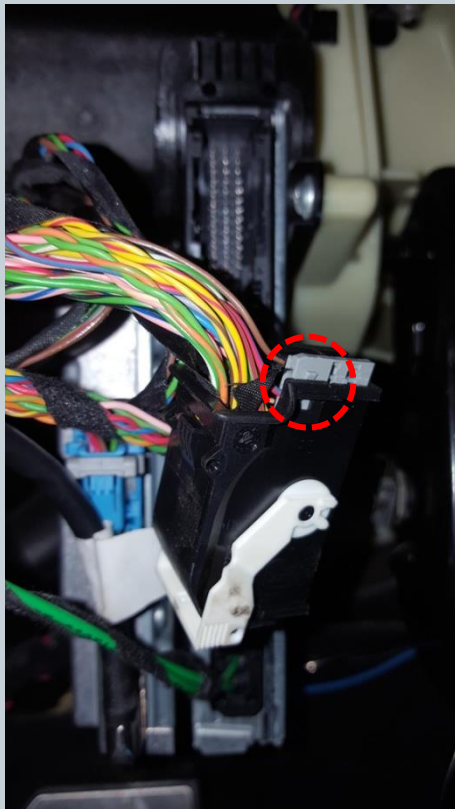
Version:V1.0

Date: 11/20/2021

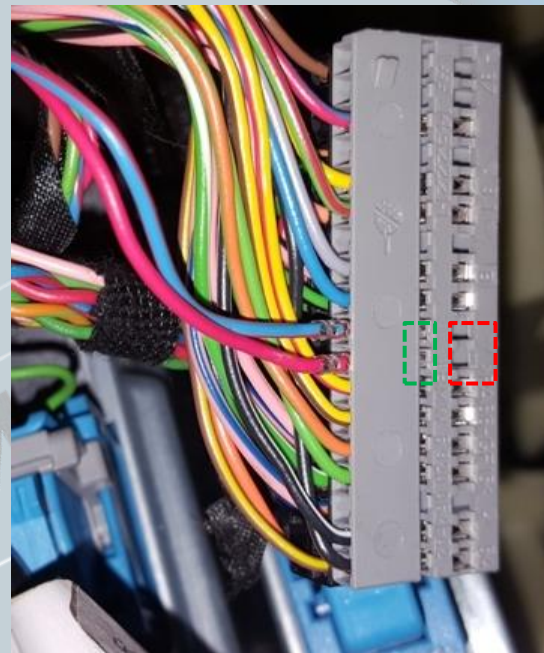


12

Connection of the WMI control unit



Unplug the black connector and pull it out of the connector housing. The housing is locked in from both sides (marked in red).



Unpin the CAN cable (blue / red and red is twisted).

Blue / red = CAN high

red = CAN low

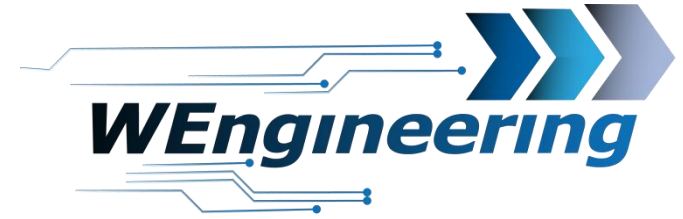
Use a small flat-blade screwdriver to push and pull on the pins on the side. First press and pull out on the red marked area, then on the green area. Carry out this process for each wire individually.

Manual instruction of Silver/BlackBox + Display

BMW Fxx 5/6 Series

Version: V1.0

Date: 11/20/2021

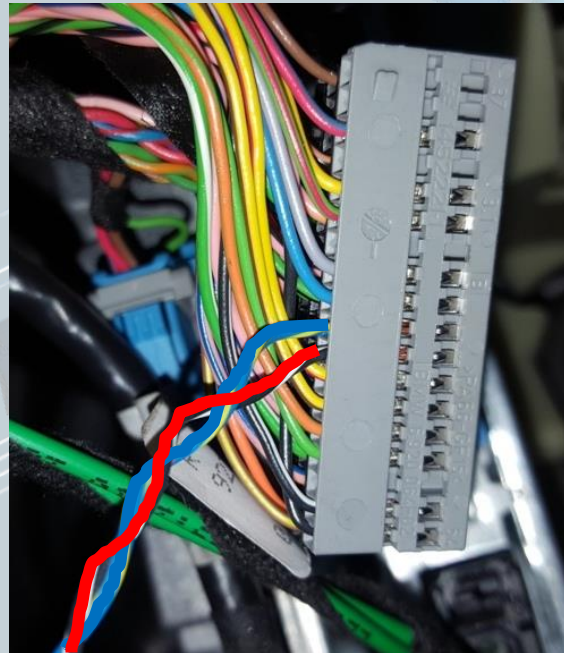


13

Connection of the WMI control unit



Pin the spun CAN cable into the connector supplied. Thereby "blue / red" on pin_1 and "red" on pin_3. The numbering is marked on the connector.

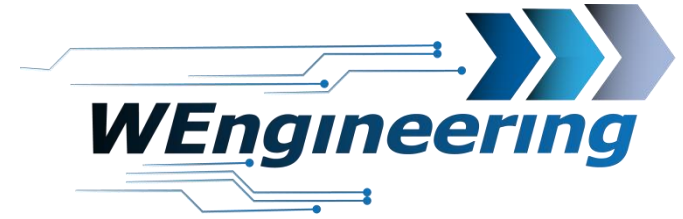


Pin the supplied CAN cable according to the picture.
Blue = CAN high
Red = CAN low

Manual instruction of Silver/BlackBox + Display BMW Fxx 5/6 Series

Version:V1.0

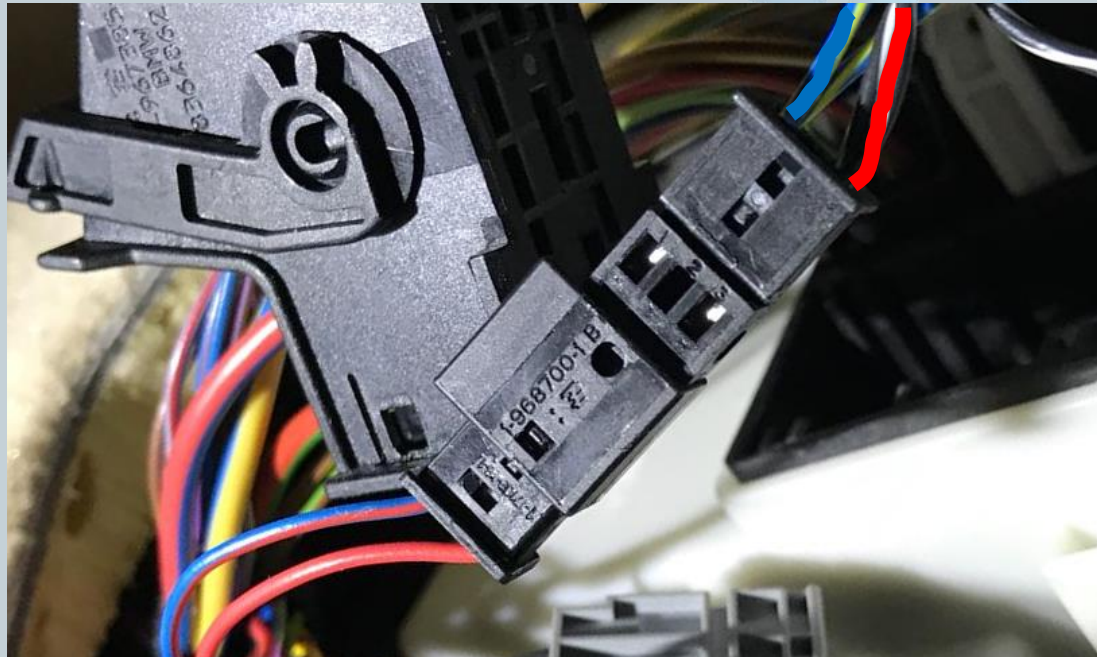
Date: 11/20/2021



14

Connection of the WMI control unit

Connect the plugs (marked in red). The connector housing can be reinstalled and finally plugged back into the control unit.



Connection of the WMI control unit

The supply for the WMI control unit can be taken from the cigarette lighter. Secure the supply with a 15A fuse! The cigarette lighter socket is switched off in the idle state. Another source of supply can be used. It is important to use a switched source.



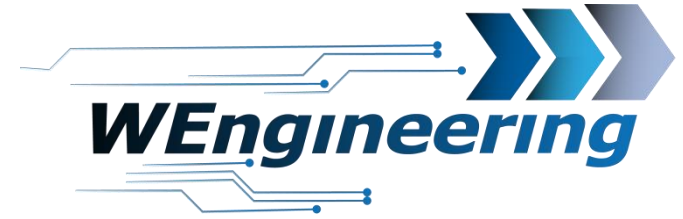
In the case of before the LCI model, the cup holder can be removed by simply pulling upwards. At the LCI the center console has to be removed to get the cigarette lighter. The center console is fastened with a screw.

Manual instruction of Silver/BlackBox + Display

BMW Fxx 5/6 Series

Version:V1.0

Date: 11/20/2021



16

Connection of the WMI control unit

The WMI control unit is attached to the carrier in the driver's footwell with a cable tie. Connect the two plugs to the WMI control unit and make sure that the plug side of the WMI control unit is oriented towards the motor.



Connection of the WMI control unit

The USB connector can be brought out in the storage compartment. The existing opening should be expanded to a USB connector size. Finally, the footwell cover can be reinstalled.

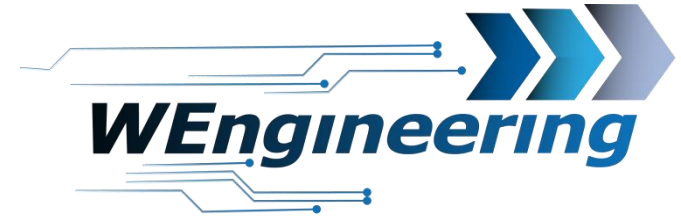


Manual instruction of Silver/BlackBox + Display

BMW Fxx 5/6 Series

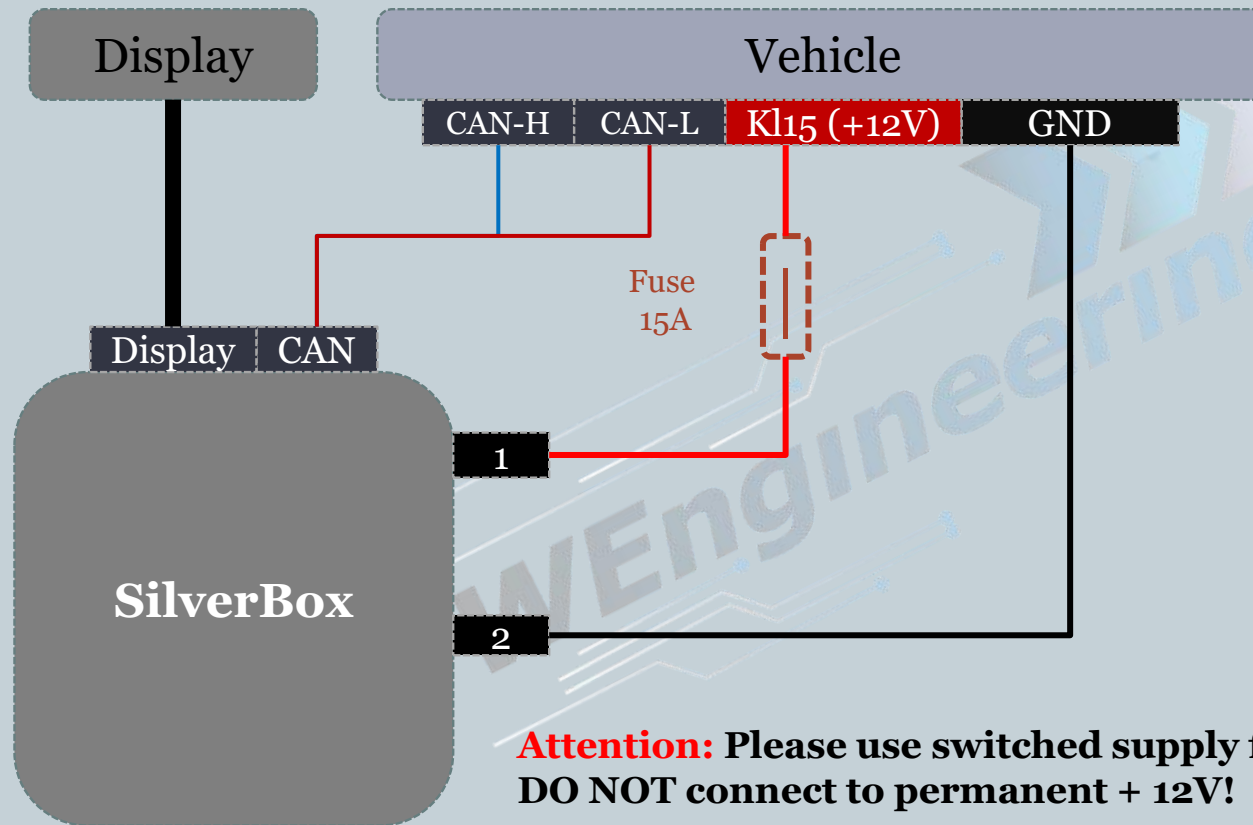
Version:V1.0

Date: 11/20/2021



18

SilverBox connection diagram on the vehicle side



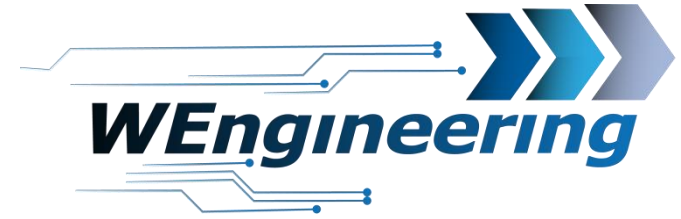
Attention: Please use switched supply for the control unit.
DO NOT connect to permanent + 12V!

Manual instruction of Silver/BlackBox + Display

BMW Fxx 5/6 Series

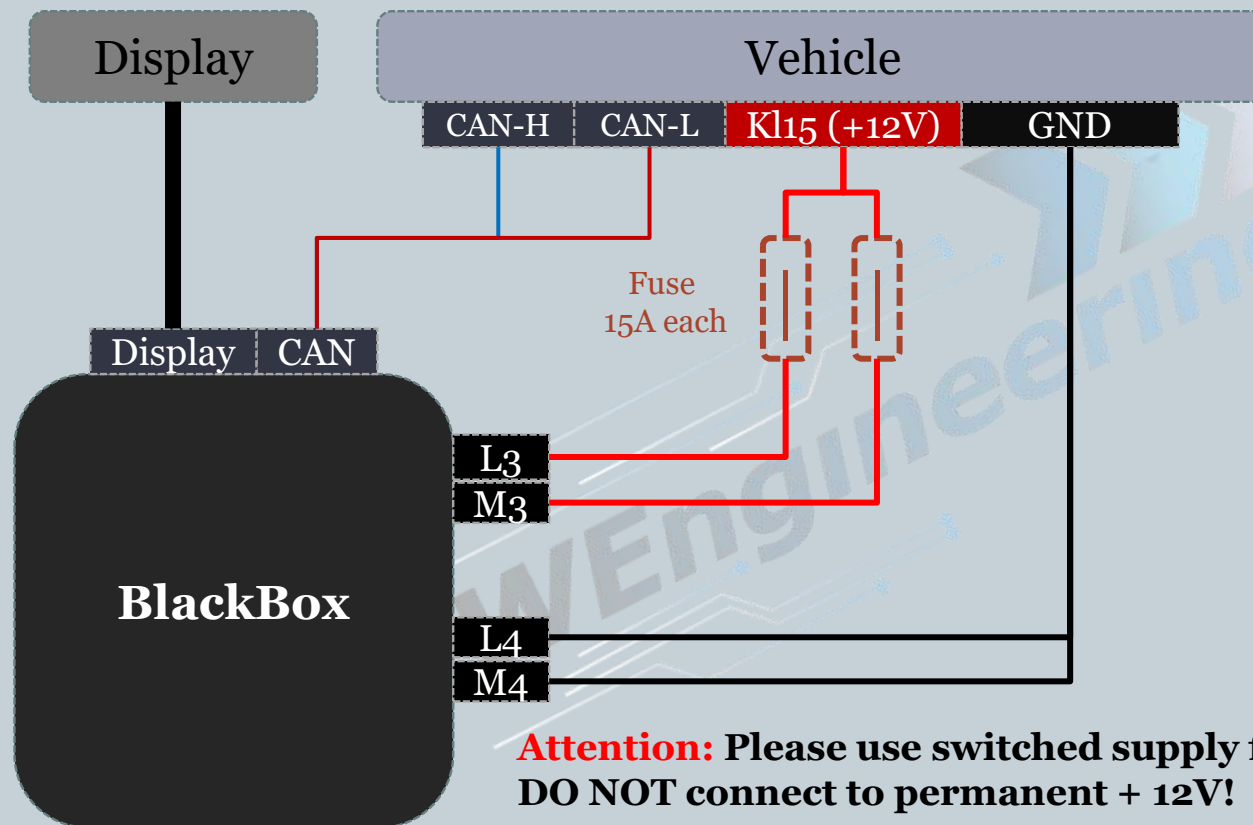
Version:V1.0

Date: 11/20/2021



19

BlackBox connection diagram on the vehicle side



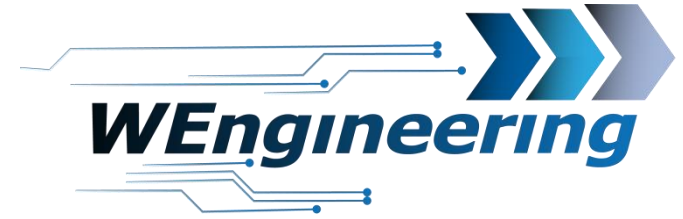
Attention: Please use switched supply for the control unit.
DO NOT connect to permanent + 12V!

Manual instruction of Silver/BlackBox + Display

BMW Fxx 5/6 Series

Version:V1.0

Date: 11/20/2021

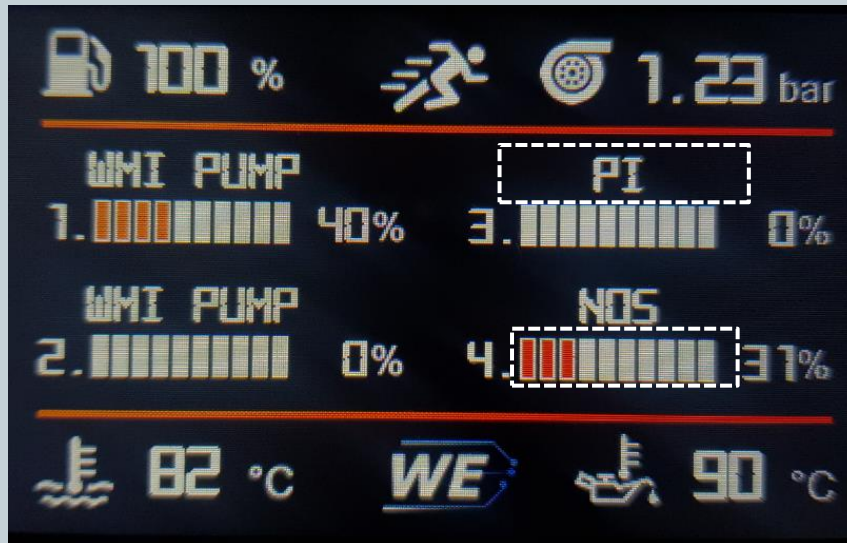


20

System test

1. Screen Injection (PWM-Test)

The BlackBox control unit has 4 PWM outputs, the SilverBox 2 PWM outputs. In this menu the status of the outputs can be viewed and put into a test mode.



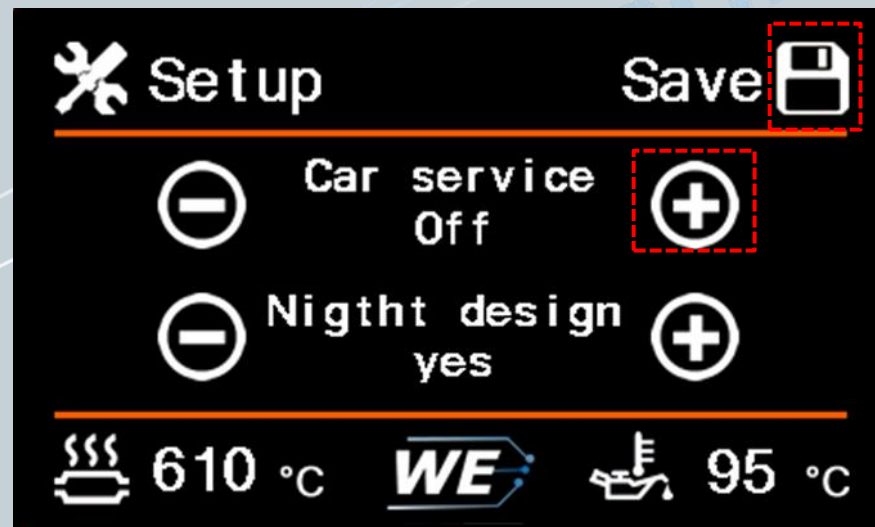
1. Which function was configured for the respective PWM output in the software.

Test function activation:

To activate the test function, press to the name of the respective PWM output. After confirmation, the name changes to "TEST". Deactivation is done in the same way. Each time you press the bar, the value increases by + 25%. After 4s the control will automatically set to 0%.

Important!

After installing the data display, the diagnostics interface is permanently blocked. This means that no communication via OBD to the engine control unit is possible. Tools such as EDIABAS, ISTA, INPA report an error while establishing a connection. In order to release the diagnostics interface, only “Car Service” has to be set to "On" before starting the engine in the setup menu. To retain the setting even after a restart, the memory function must be performed. This is recommended before you visit the workshop or logging data via OBD. **The WMI functionality will not stop working if the Car Service is active, only the diagnostic interface will be released and some signals like boost pressure are not available.**



Manual instruction of Silver/BlackBox + Display

BMW Fxx 5/6 Series

Version:V1.0

Date: 11/20/2021



22

Adjust the display brightness

The display brightness is controlled centrally via the ambient lighting. For a perfect display brightness we recommend the following setting. In absolute darkness, turn the rotary control for the central lighting back until you will get a value between 25 and 37.

